



Final words

By Stefanie Linser, Environment Agency Austria, Jo Van Brusselen, EFI, Tim Green, EFI

The work done by the GSE FM User Executive Body "by the users for the users" will now be finalised with the 10th issue of the GSE FM newsletter. We thank you very much for your participation and interest in the work of the UEB and hope that the articles raised your interest many times. In this regard we also thank all authors for their interesting contributions about their service cases and related projects. We look forward to further cooperation with you - also within other EO projects - to ensure the sustainability of this user network.

Polish service case

By Anna Orlinska, Przemyslaw Turowski, GEOSYSTEMS Polska

Polish forests cover almost 30% (>90000 km²) of the total land area of Poland. State forests constitute about 78% of the total forest area, with the remaining area belonging mainly to individuals. Within the European Extension of GSE FM, maps of the forest resources based on Earth Observation data have been provided to the Polish forest administration. The project is a support to National UNFCCC and Kyoto Protocol Reporting on Land Use, Land-Use Change and Forestry (LULUCF) activities.

Two end user organizations were identified and the project has received support from both: Department of Climate Change and Atmosphere Protection; and the General Directorate of Environmental Protection.

The provided products of this service case include: (1) a forest area map 1990; (2) a forest type map 2006 (Figure 1); (3) a forest area change map 1990/2006; and (4-5) orthomosaics for 1990 and 2006. All products were elaborated for the whole of Poland and are compliant with GSE FM Portfolio specifications. The forest area map was generated from archived Landsat TM-5 dataset around the year 1990. The forest type map 2006 was derived from the Image 2006 data (SPOT-4 and 5 HRG as well as IRS-P6 LISS III). The maps were validated by interpretation on aerial photographs for 1990 and on National Forest Inventory data for 2006. In order to generate National Volume, Biomass and Carbon Statistics GEOSYSTEMS Polska cooperated with a commercial company Taxus SI Ltd from Warsaw. Taxus prepared the statistics based on the National Forest Inventory (The State Forests IT System) and Large Area Forest Inventory.

Training for the identified users of the services will be arranged in the first part of 2011.

The map products are located in a geoportal hosted by GEOSYSTEMS Polska (<http://geosystems.pl/>). The service features a Web Coverage Service (available to the identified end-users of services) and a Web Map Service (available to all interested parties – see GMES > GSE FM > geoportal GSE FM).

EURISY position paper – Creating sufficient user pull to secure the benefits of satellite services for society

Eurisy has called for urgent action to accelerate the sustainable implementation of satellite services by potential end-users in its recently published position paper.

The position paper makes a number of recommendations including:

- Directing part of the Space budget directly to the end-users
- Making resources available through existing calls dedicated to these end-users (e.g. within INTERREG for regions, Intelligent Energy Europe for SMES, etc.)

The position paper is available at <http://www.eurisy.org/index.php/news/item/109-eurisy-position-paper-released.html>

In this issue:

- Final words
- Polish service case
- EURISY position paper
- EUFODOS
- LISA Land Information System Austria
- GMES User Forum

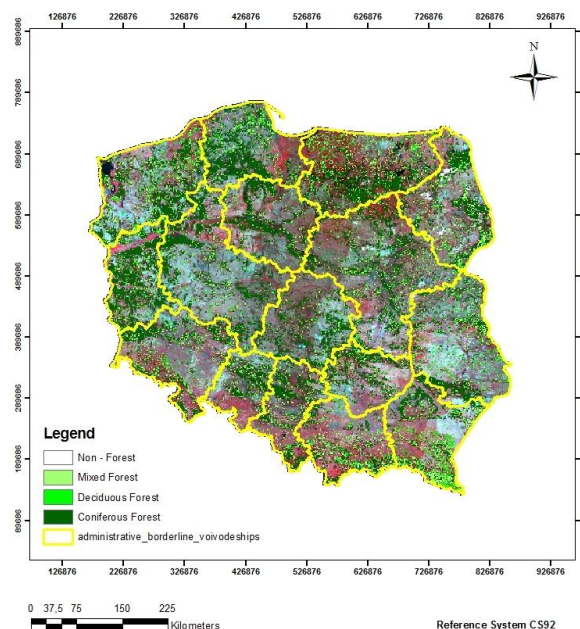


Figure 1. Forest Type Map 2006, Poland.



New European Forest Downstream Services starting 1. January 2011: EUFODOS - Improved Information on Forest Structure and Damages

By Mathias Schardt, JOANNEUM RESEARCH Austria

The overall aim of EUFODOS is to develop specific Forest Downstream Services (FDS) that are urgently required by regional European users in an economically viable manner and use the GMES Land Forest Core products as a basis for the development of these services. The specific FDS, which will be examined and developed to a pre-operational level, are related to the assessment of forest damage, the mapping of forest functional parameters and as a support to wood procurement planning.

The FDS are based on three foundations: technical/methodological developments which will be based on an approach that combines Earth Observation (EO) with in-situ data as well as the inclusion of GMES Forest Core products; the formation of a functional Service Network (SN) which includes effective representation/involvement of the user community, the service providers and the research community; and the assessment of the economic feasibility of each service case in a sustainable way. The FDS will also provide a validation of the GMES services / products and an effective involvement of all stakeholders. The project is coordinated by JOANNEUM RESEARCH Austria. More information can be obtained from mathias.schardt@joanneum.at

Land Information System Austria (LISA) Phase 1 finalized - first datasets available

By Gebhard Banko, Environment Agency Austria

Austria has recently finalized the first steps for an integrated bottom-up based approach in land monitoring. The joint project LISA (land information system Austria) has developed a standard data model that is based on all relevant international standards and is compatible with the ongoing INSPIRE land cover data specifications. Based on 0.5×0.5m orthophotos, airborne laser scanning data and GMES-Services, 14 land cover classes with 12 attributes and with the additional support of in-situ data (LPIS, building registry, cadastral maps, road and river databases, inventories of nature conservation) 25 land use classes with 72 attributes were produced in 49 test areas in Austria. Despite the technical innovation, the key factor of success was the joint approach of all relevant stakeholders driven by user requirements. The key users in public administration on both federal and national level (spatial planning, nature conservation, forestry, agriculture, infrastructure, ...) have cooperated in the definition and in agreeing on a standard data model. Thus this data model will be an important input for the European discussions taken up as part of the GIO-discussions within the HELM-project (Harmonized European Land Monitoring). The next step within LISA (2011-2012) will be the development of change monitoring approaches and methods for upscaling and semantic transformation. A full-area roll out is envisaged for 2014+. Background information and complete data packages are available from the project web-site <http://www.landinformationsystem.at/>



User Engagement in GMES - Elements for implementation of the User Forum

By Stefanie Linser, Environment Agency Austria

The European Parliament and Council Regulation on the European Earth monitoring programme (GMES) and its initial operations (2011-2013) entered into force on 9 November 2010. The primary objective of GMES is to meet user needs. The new Regulation establishes the User Forum as a dedicated body consisting of GMES public sector users appointed by the Member States. The tasks of the User Forum, listed in various articles of the Regulation, are to advise the Commission, in particular on the definition and validation of user requirements. Partners Board delegations have expressed the wish that the functioning of the User Forum be discussed at the next meeting, and that the User Forum is set up and starts working as soon as possible.

The text of the regulation can be found at <http://register.consilium.europa.eu/pdf/en/10/pe00/pe00022-re01.en10.pdf>

A document which sets out the initial concept and elements for implementation of the User Forum and more in general, of mechanisms for user consultation was now provided to the Partners Board for discussion. The Commission will take into account comments from the Partners Board in setting up the User Forum.

Note from editors

This is the final issue of the GSE FM newsletter. We thank you very much for all the contributions and interest, and wish you all the very best for 2011 and beyond.

For Editorial Matters Contact:

European Forest Institute
Secretariat, GSE FM UEB
Tim Green
tim.green@efi.int