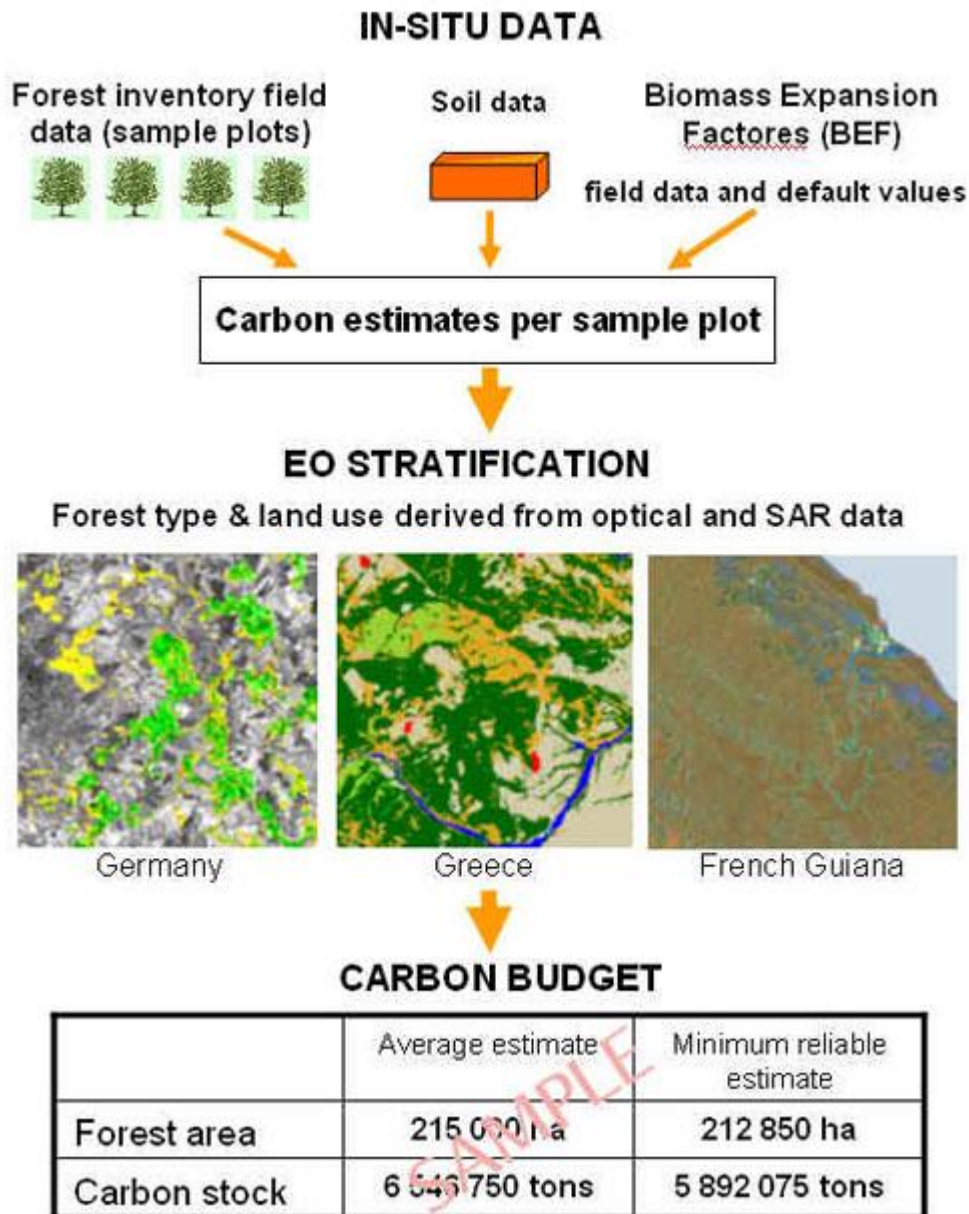


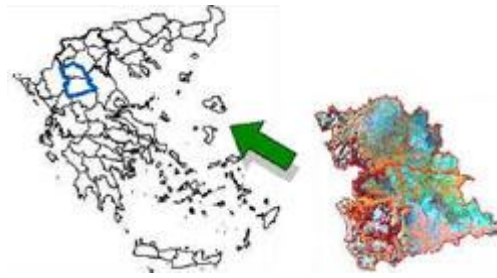
Service Cases 2003

In the first phase of GSE-FM, the GHG Reporting Service was applied on service areas in three different countries (Germany, Greece and French Guiana). Within this service, both optical and radar datasets were used successfully.

General Workflow



Service Case Greece 2003



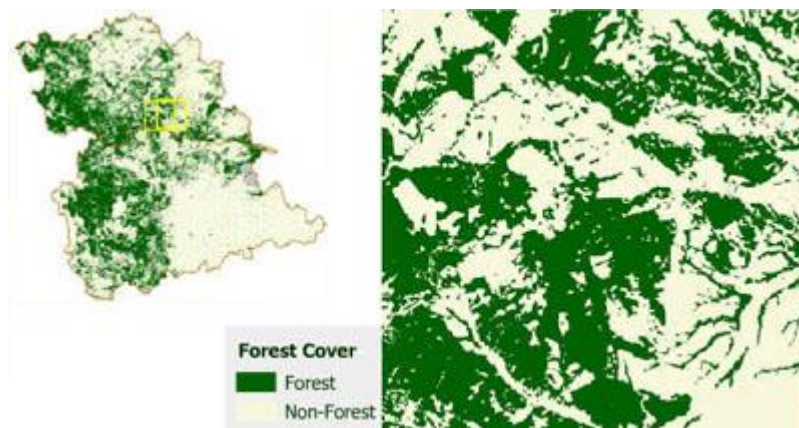
Service Area in Greece 2003

User Statement: "Forest Monitoring is required for the implementation of the Kyoto Protocol. Homogenized data on a national level in Greece are either lack accuracy assessment or adequate resolution.

Information for our forests is though not sufficient. The present remote sensing based service provides thematic products compilliant to the specifications. Detail (thematic and location), harmonization, multi-date consistent monitoring are clearly the advantages of this service."

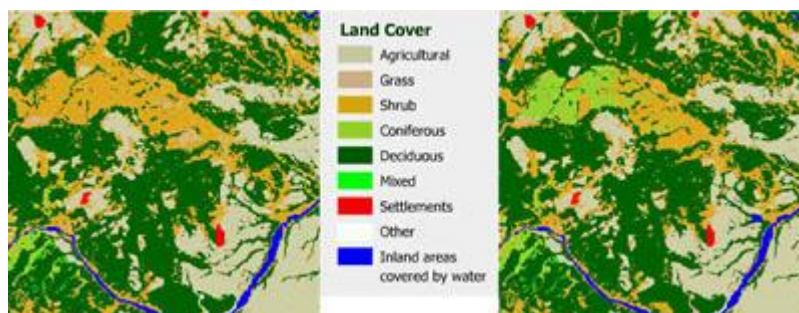
Prof. D. Lalas, National Observatory of Athens, Institute for Environmental Research and Sustainable Development (NOA-IERSD), Greece

Forest Area Map

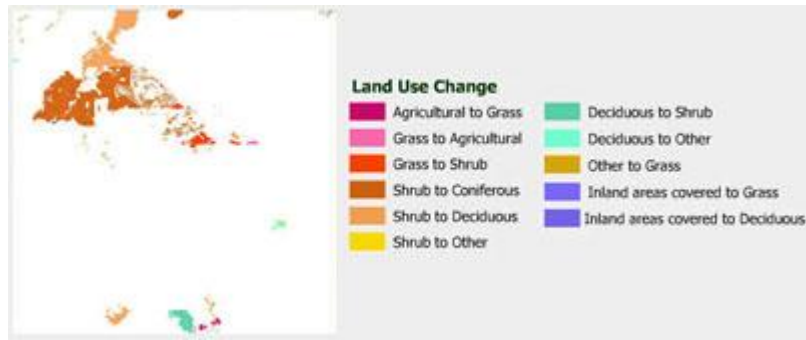


Forest Area in Greece 2002

Land Use / Land Cover Map



Land Use / Land Cover Maps 1990 (left) 2002 (right)



Land Use / Land Cover Change Map 1990-2002